

Proposal of Emergy Summit²⁰¹⁶

World Summit – Emergy Analysis for Designing a
Prosperous and Sustainable Future

July 4-6, 2016

Beijing, China

Hosts:

School of Environment, Beijing Normal University
State Key Joint Laboratory of Environmental Simulation and Pollution Control
China Chapter of International Society of Advanced Emergy Research

Sponsors:

International Society of Advanced Emergy Research

Supporters:

Natural Science Foundation of China
Journal of Environmental Accounting and Management



Urbanization process and natural influences continually bring about changes in ecosystems. The primary objective of compound socio-economic system development and metabolism is to provide scientific and statistically reliable data that can be used in numerical simulation and decision making related to the corresponding compound system's "disorder" in the process of development. Energy evaluation is an effective tool in analyzing the efficiency and sustainability of an ecological system. This international summit will provide a chance for academic and decision-making professionals to discuss recent progress to develop the energy theory and method of modeling the anthropogenic impacts on compound socio-economic systems. Topics of relevance include but are not limited to the following areas. Excellent surveying works in these areas are welcome, too:

1. A broad outline of the character and composition of the resources and energy required to sustain all human activities,

including land transformation, food security, modifications of energy, hydrological and nutrient cycles, economic agglomeration, peak oil, industrial intensification, population attraction and waste production.

2. Determining and maintaining levels of sustainability and health simulation around the world,

including the contribution of cities to global warming, opportunities for better management of waste electronics and storm water, and the reuse and recycle of the waste—a resource that is both potentially scarce and polluting, etc.

Keynote Speakers

Daniel E. Campbell (US EPA, USA)

Mark T. Brown (University of Florida, USA)

Sergio Ulgiati (Parthenope University of Napoli, Italy)

Brian Fath (Towson University, USA)

.....

Potential Conference Topics and Streams

Stream A: Integrated Environmental Accounting

- Session A1: Environmental and Ecological Accounting
- Session A1: Energy and Resource Use
- Session A3: Intelligent Environmental Decision Support Systems
- Session A4: Integrated Hydrodynamic, Hydrological, Water Quality, and Ecological Models

Stream B: Planning and Management in Human Dimension-Institutions

- Session B1: Patterns for Socio-Economic Systems
- Session B1: Industrial Ecology
- Session B3: Ecological Informatics

Stream C: Environmental Modeling Uncertainty Issues

- Session C1: Complexity, Sensitivity, and Uncertainty Issues in Integrated Environmental Models
- Session C2: Accounting for Uncertainty in Decision Support by Treating Model Assumptions as Scenarios

Stream D: GIS and Visualization

- Session D1: GIS and Environmental Modeling for Decision Support
- Session D2: Virtual Reality, Landscape and Urban Planning

Stream E: Environmental Modeling for Health and Human Issues

- Session E1: Data Acquisition, Management and Processing for Sustainability Appraisal
- Session E2: Environmental Modeling of Human Health Effects from Global to Local Scale
- Session E3: Modeling of Human-Environment Systems in a Global Context

Stream F: Energy and Policy

- Session F1: Using Energy to Improve Understanding of Environmental Systems
- Session F2: Tools based Decision Support for Complex Environmental Systems
- Session F3: Systems Modeling and Climate Change: A Systematic Methodology for Disentangling Elements of Vulnerability, Adaptation and Adaptive Capacity
- Session F4: New Challenges for Agricultural Systems Modeling

Location and Venue

Conference Location: Yingdong Academic Hall



Keynote Session will be set in Lecture Hall for more than 200 participates.

Plenary Session will be set in other meeting room in the same building.

Proposal

World Summit – Energy Analysis for Designing a Prosperous and Sustainable Future

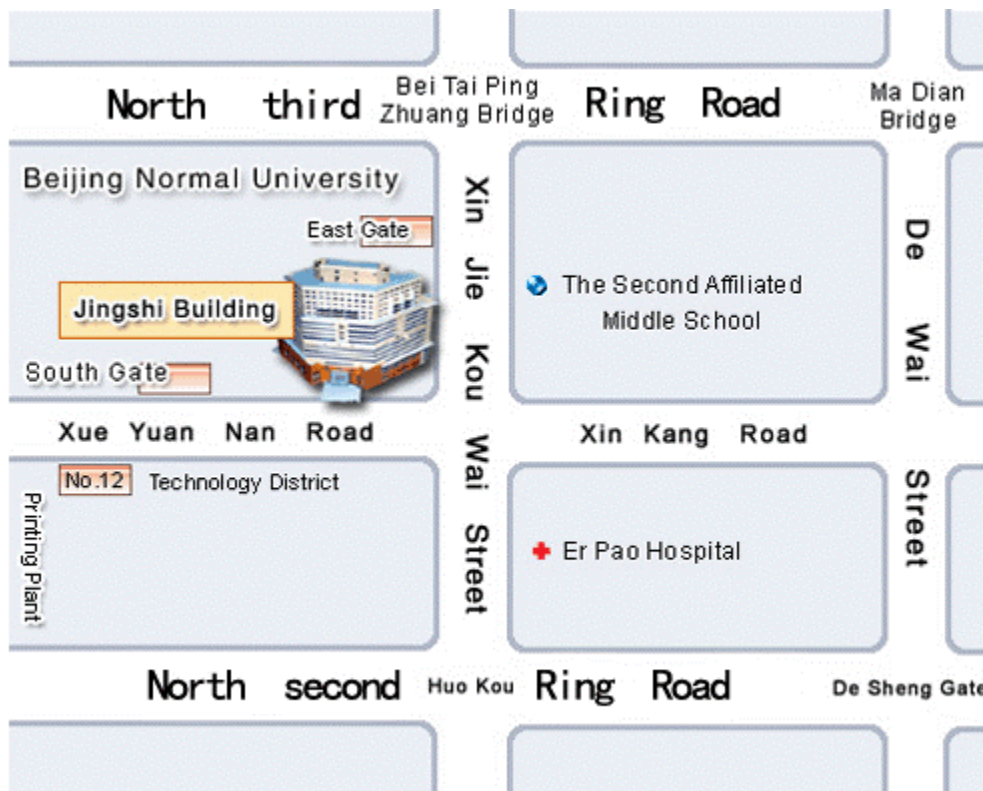
Venue: Jingshi Hotel



- **Website:**
<http://www.ciae.bnu.edu.cn/>
- **Room Type:**
Standard Twin Room
- **Hotel Rates:**
Standard 558-780 RMB/day (89-125\$)
Deluxe suite 860-1100 RMB/day (138-176\$)
- **Method of Reservation:**
Email Us.

About the hotel:

Jingshi hotel is invested and managed by Beijing Normal University. It is designed as a five-star comprehensive service center. There are convention centers, office, luxury apartments, guest rooms and restaurants. Jingshi hotel is famous for a long history of profound culture which goes with this famous university. Jingshi International Academy Exchange Center, 48,000 square meters, is situated at the southeast of Beijing Normal University. It is close to Xinjiekouwai Street in the east and Xueyuan Street in the south. It is well located. It has the most advanced communication and public security systems.



Publications

- Selected papers will be published in a special issue of Journal of Environmental Accounting and Management.
- A book of abstracts will be published before the conference with the full conference programme.
- The Best Paper Award honors the author(s) of the highest quality papers. The award includes a framed certificate. The author of Best Paper Award will be recognized in the conference.

Conference Committees

International Scientific Advisory Committee

Chair

- ✓ Zhifeng Yang (Beijing Normal University, China)
- ✓ Torbjörn Rydberg (Centre for Sustainable Agriculture, Sweden)

Co-Chairs

- ✓ Daniel E. Campbell (US EPA, USA)
- ✓ Mark T. Brown (University of Florida, USA)
- ✓ Sergio Ulgiati (Parthenope University of Napoli, Italy)
- ✓ Murray Patterson (Massey University, New Zealand)

Scientific Committee Members

- ✓ Simone Bastianoni (University of Siena, Italy)
- ✓ Biagio Giannetti (Paulista University, Brazil)
- ✓ Hans Schnitzer (Graz University of Technology, Austria)
- ✓ Salvatore Arico (UNESCO, Division of Ecological Sciences, France)
- ✓ Bhavik Bakshi (The Ohio State University Columbus, USA)
- ✓ Enrico Benetto (Henri Tudor Resource Centre for Environmental Technologies, Luxembourg)
- ✓ Federico M. Butera (Politecnico di Milano, Italy)
- ✓ Guoqian Chen (Peking University, China)
- ✓ Francesco Cherubini (Norwegian Univ. of Science and Technology, Norway)
- ✓ Brian D. Fath (Towson University, USA)
- ✓ Matthias Finkbeiner (Technische Universität München, Germany)
- ✓ Pier Paolo Franzese (Norwegian Univ. of Science and Technology, Norway)
- ✓ Helmut Haberl (Alpen Adria Universität, Austria)

- ✓ Shu-Li Huang (National Taipei University, Taiwan)
- ✓ Gordon Huang (University of Regina, Canada)
- ✓ Wesley W. Ingwersen (National Risk Management Research Laboratory, US EPA, USA)
- ✓ Christine Jasch (Vienna Institute for Environmental Management and Economics, Austria)
- ✓ Christer Jonasson (Uppsala University, Sweden)
- ✓ Dan L. Johnson (University of Lethbridge, Canada)
- ✓ Sven Erik Jørgensen (Copenhagen University, Denmark)
- ✓ Noam Lior (University of Pennsylvania, USA)
- ✓ Hongfang Lu (South China Botanical Garden, Chinese Academy of Science, China)
- ✓ David Maradan (University of Geneva, Switzerland)
- ✓ Antonino Marvuglia (Henri Tudor Resource Centre for Environmental Technologies, Luxembourg)
- ✓ Paolo Masoni (The LCA and Ecodesign Laboratory, Italy)
- ✓ Andrzej Nienartowicz (Nicolaus Copernicus University, Poland)
- ✓ Enrique Ortega (the State University of Campinas, Brazil)
- ✓ Walter A. Pengue (Universidad Nacional de General Sarmiento, Argentina)
- ✓ Marco Raugei (Oxford Brookes University, UK)
- ✓ B. Sudhakara Reddy (Indira Gandhi Institute of Development Research, India)
- ✓ Joseph A. Tainter (Utah State University, USA)
- ✓ David R. Tilley (University of Maryland, USA)
- ✓ Alicia Valero (University of Zaragoza, Spain)
- ✓ Cecilia M. Villas Bôas de Almeida (Paulista University, Brazil)
- ✓ Mathis Wackernagel (Global Footprint Network, USA)
- ✓ Maochao Yan (China Agricultural University, China)
- ✓ Maciej Zalewski (University of Lodz, Poland)

Organizing Committee

General Secretary

- ✓ Gengyuan Liu (Beijing Normal University, Beijing, China)

Member

- ✓ Lixiao Zhang (Beijing Normal University, Beijing, China)
- ✓ Yan Zhang (Beijing Normal University, Beijing, China)
- ✓ Meirong Su (Beijing Normal University, Beijing, China)

We appreciate that you would like to forward this email to those who take interest in it. For further information, please mail to liugengyuan@bnu.edu.cn.

Sponsoring agencies

- Natural Science Foundation of China;
- Beijing Normal University;
- Local software companies

ISAER Biennial Best Young Researcher Paper Prize

Any author, age 39 or younger, who has a paper accepted before deadline is eligible. Forward a PDF of the paper with indication for consideration of the Best Young Researcher Paper Prize to the Chair of the Summit (Zhifeng Yang and Torbjörn Rydberg). The authors will win registration and \$1500 for travel expenses to attend the upcoming world summit in Beijing, China, plus they'll have a speaking slot to present your paper. Self-nominations are accepted.

Papers will be evaluated by a small group of International Scientific Advisory Committee for overall impact, originality, and quality of work. Contact Dr. Gengyuan Liu for further questions as needed.

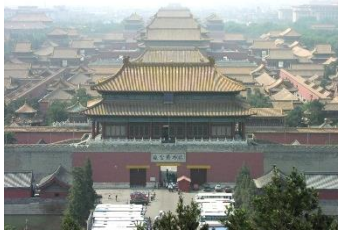
Excursion Plan after the Conference

Beijing is one of the four great ancient capitals of China with a history of more than 3000 years. It is China's second largest city, with more than 17 million people. Beijing is recognized as the political, educational, and cultural center of China. It is described as "one of the world's great cities" and declares that the city has been an integral part of China's history for centuries. This city is renowned for its opulent palaces, temples, and huge stone walls and gates. Nowadays, Beijing has developed into an international modern city and hosted the 2008 Olympic Games successfully. The National Grand Theater, the 3rd Terminal Building of Beijing International Airport, "Bird Nest" National Stadium and "Water Cube" National Swimming Center are modern signatures of this developing city. Furthermore, many of the best universities of China are located in Beijing, such as Peking University, Tsinghua University and Beijing Normal University.

We have arranged three one-day bus tours at the last day of the conference after all technical programs. It is free for the conference participants with a full registration to choose one of them.

Excursion 1:

The excursion will lead us to some famous cultural sites of Beijing, where we will be able to visit the Forbidden City, Summer Palace and Temple of Heaven.



The Forbidden City



The Summer Palace



The Temple of Heaven

Excursion 2:

The excursion will lead us to some historical sites and Olympic facilities of Beijing, where we will be able to visit the Great Wall, Bird Nest and Water Cube.



The Great Wall



Bird Nest



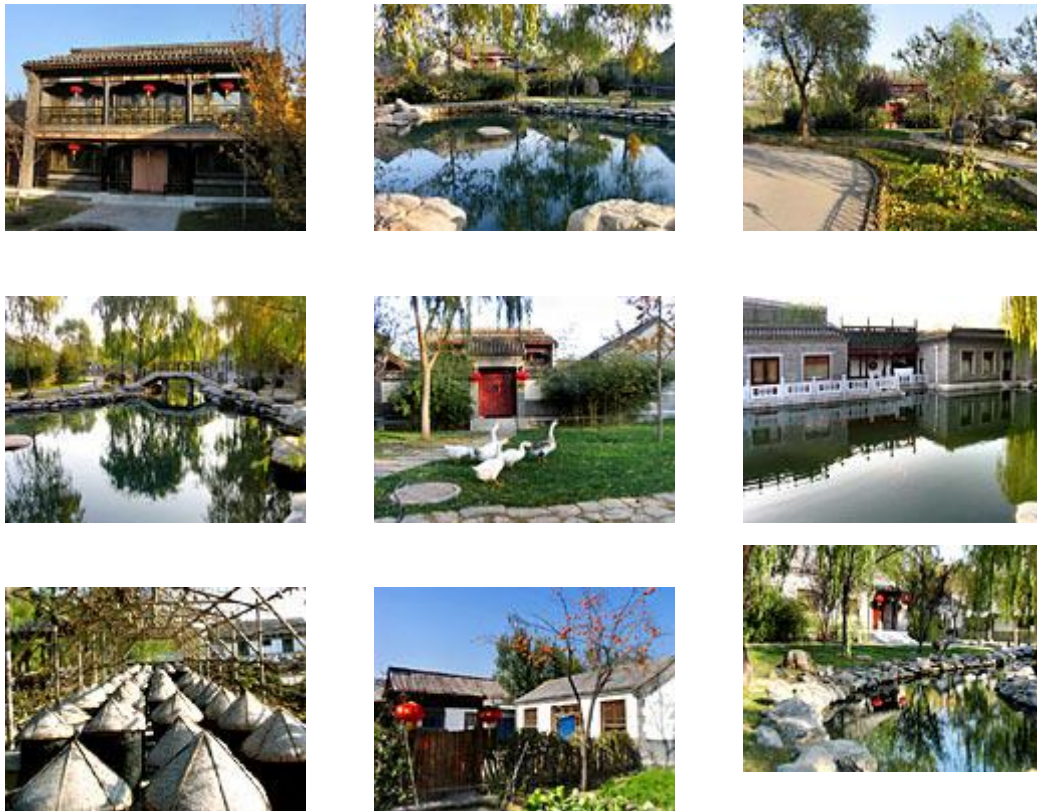
Water Cube

Excursion 3:

We also arrange an excursion to Xiedao, an eco-farm, which located in the northeastern suburb of Beijing. Xiedao (Crab Island) covers an area of 40 hectares, and is named by the State Environmental Protection Administration and the China Society of Environmental Science as an example site of ecological agriculture. The resort is divided into three areas, namely a plant-growing area, a fish and poultry breeding area as well as lodging and entertainment facilities. There are also several parks including a Plantation Park, an Animal Breeding Park, a Science and Technology Park and a Tourism and Holiday Park. This resort features a broad selection of various recreational facilities and activities including a Sea-view Aquatic Entertainment Park, hot spring swimming pools, a fitness center, a bowling alley, an indoor fishing pool, cock fight games and goat fight games. For dining, there are Chinese family style dishes, BBQ, a coffeehouse, a bar, a teahouse and a lobby bar.

Proposal

World Summit – Emery Analysis for Designing a Prosperous and Sustainable Future



Xiedao eco-farm

Tentative Budget

We will try to reduce the registration fees (possibly \$300 US for normal participant; \$250 US for ISAER member, and \$200 US for students, depending on the total number of participants), as low as possible in order to increase the number of attendees. Also, we will try to find financial support as much as we can from sponsors for partially offsetting the cost of the conference center and meals at the hotel.

- Standard Room 440-480 RMB/day (74-78 \$)
- Deluxe Suite 850-1200 RMB/day (140-200 \$)

We expect to attract:

- 100-200 participants (registrations): revenue: \$ 30,000 - \$ 40,000 US
- 10-15 sponsors from Chinese government agencies, Universities, private companies and other sectors to contribute each about \$ 20,000- \$ 30,000 US

The fee of Keynote speakers will be covered by the organizing committee. We deliver to a balanced budget at the end of the meeting.

Advertisement

We will advertise the conference as much as possible including:

- Key Websites: professional organization like ISAER, ISAER-China Chapter, SINO-ECO,

ScienceNet.cn;

- Key E-mail lists: ISAER updated e-mail list, Ecolog-L, Climate Change etc.;
- Key professional Newsletters like ScienceNet.cn, IGBP, etc.;
- By distributing the Conference Flyers;
- By colleagues, friends e-mails etc.;

Conference Schedule

Pre-conference activity, July. 3, Sunday

Time	Event
09:00–19:00	Tutorial
09:00-19:00	Registration for conference, Poster set-up

Day 1: July. 4, Monday

Time	Event
09:00–09:20	Welcome Speech
09:20–10:20	Keynote Speeches
10:20–10:40	Coffee Break
10:40–12:00	Parallel Sessions A, B
12:00–13:00	Lunch
13:00–15:00	Parallel Sessions A, B
15:00–15:30	Coffee Break and Poster Session
15:30–17:00	Parallel Sessions A, B

Day 2: July. 5, Tuesday

Time	Event
08:30–10:30	Keynote Speeches
10:30–11:00	Coffee Break and Poster Session
11:00–12:00	Parallel Sessions C, D
12:00–13:00	Lunch
13:00–15:00	Parallel Sessions C, D
15:00–15:30	Coffee Break and Poster Session
15:30–17:00	Parallel Sessions C, D
18:00-20:00	Banquet

Day 3: July 6, Wednesday

Time	Event
08:30–10:00	Parallel Sessions E, F
10:00–10:30	Coffee Break
10:30–11:30	Parallel Sessions E, F

11:30–12:00	Announcement
12:00	End of the Conference

Contact information

Gengyuan Liu

School of Environment, Beijing Normal University,
19 Xijiekouwai Street, Haidian District, Beijing 100875, China
Email: liugengyuan@bnu.edu.cn
Phone: +86 -13811146331

Relevant experience

Zhifeng Yang (School of Environment, Beijing Normal University)

- ✓ **President** for ISAER-China
- ✓ **Committee Member** of Academic Subjects Assessment Committee under State Council
- ✓ **Branch Chairman** of International Environmental Informatics Association
- ✓ **Branch Chairman** of Environmental Geography of Chinese Society for Environmental Sciences
- ✓ **Member** of Science and Technology Committee of Ministry of Education, China
- ✓ **Editor-in-Chief** of Journal of Environmental Accounting and Management
- ✓ **Associate editor** of Journal of Environmental Informatics, Journal of Environmental Sciences
- ✓ **Associate editor** of Frontiers of Earth Science
- ✓ **Guest editor** of Ecological Modelling, Ecological Informatics
- ✓ **Editorial member** of Journal of Hydrodynamics, Communications in Nonlinear Science and Numerical Simulation, Frontiers of Environmental & Engineering in China
- ✓ **Chair** of ISEIS 2010, International Conference on Ecological Informatics and Ecosystem Conservation, August 27-29, 2010.
- ✓ **Chair** of ISEM 2011, International Conference - Ecological Modelling for Global Change and Coupled Human and Natural Systems, Beijing, China.
- ✓ **Chair** of PACE 2013 International Symposium on Environmental Economics and Policy in China & 4th Summer Camp for Chinese Environmental and Resource Economists, Dalian, China
- ✓ **Chair** of ISRS 2013 The 3rd Biennial Symposium of International Society for River Science (ISRS) —Achieving healthy and viable rivers, Beijing, China